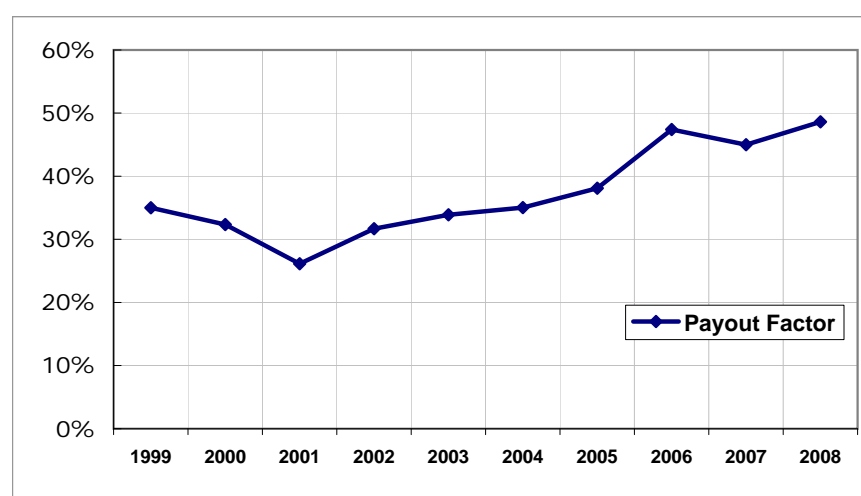
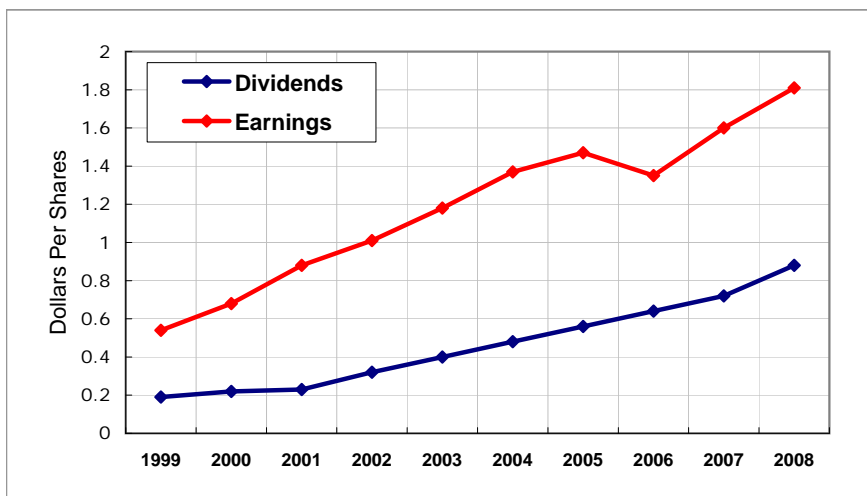
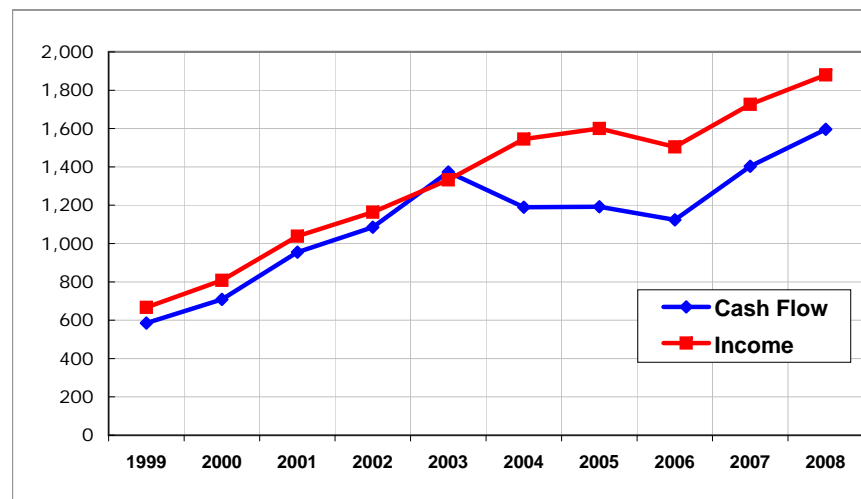
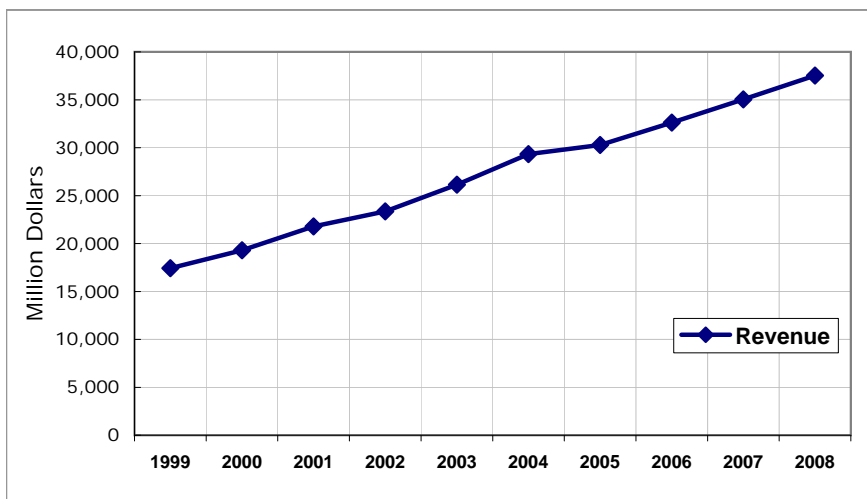


## Trend Analysis



SY	SY										Average Std. Dev - 0.5 stdev + 0.5 stdev (10 Years)			
	1999	2000	2001	2002	2003	2004	2005	2006	2007	2008				
P/E	33.4	38.2	27.9	27.5	29.1	26.9	22	25.4	18.4	12.5	26.13	7.27		
Revenue	17,423	19,303	21,785	23,351	26,140	29,335	30,282	32,628	35,042	37,522				
EPS continuing ops	0.54	0.68	0.88	1.01	1.18	1.37	1.47	1.35	1.6	1.81				
Div per share	0.19	0.22	0.23	0.32	0.4	0.48	0.56	0.64	0.72	0.88				
Cash flow from operations	585	709	955	1,085	1,373	1,190	1,192	1,124	1,403	1,596				
Income from operations	667	808	1,038	1,164	1,333	1,545	1,600	1,504	1,726	1,880				
Gross margin	18.5%	18.9%	19.6%	19.8%	19.7%	19.3%	19.1%	19.3%	19.3%	19.2%	19.3%	0.4%	19%	19%
Operating margin	3.8%	4.2%	4.8%	5.0%	5.1%	5.3%	5.3%	4.6%	4.9%	5.0%	4.8%	0.5%	5%	5%
Payout factor	35%	32%	26%	32%	34%	35%	38%	47%	45%	49%	37%	7%	34%	41%
High Yield	1.68%	1.06%	1.51%	1.75%	1.63%	1.87%	2.42%	2.41%	3.64%	3.99%	2.20%	0.95%	1.72%	2.67%
Dividend Growth (y-o-y)		16%	5%	39%	25%	20%	17%	14%	13%	22%	18.9%	9.6%		
Revenue Growth (y-o-y)	13.7%	10.8%	12.9%	7.2%	12.0%	12.2%	3.2%	7.8%	7.4%	7.1%	9.4%	3.4%		
Operating Income (y-o-y)	12.8%	21.3%	28.5%	12.1%	14.5%	15.9%	3.6%	-6.0%	14.8%	8.9%	12.6%	9.4%		
EPS (y-o-y)	13.7%	25.9%	29.4%	14.8%	16.8%	16.1%	7.3%	-8.2%	18.5%	13.1%	14.7%	10.2%	9.62%	19.86%
Total Assets	4,097	4,814	5,469	5,990	6,937	7,848	8,268	8,992	9,519	10,082				
Total Liabilities	2,669	3,052	3,321	3,857	4,739	5,283	5,509	5,940	6,241	6,673				
Ratio (Liabilities/Assets)	65%	63%	61%	64%	68%	67%	67%	66%	66%	66%	65.4%	2.2%	64%	66%
Financial Leverage	2.87	2.73	2.55	2.81	3.16	3.06	3.00	2.95	2.90	2.96	2.90	0.17	2.81	2.99

Copyright © 2008-2009, Dividend Tree